

Import Illumina iControlDB Data

Author: Jesse Dupre, Golden Helix, Inc.

Overview

This script will import Illumina data exported from the iControl database. In order for this script to work properly the iControl data should be in the same format as the following file:

http://www.goldenhelix.com/downloads/bin/Illumina_control_samples_matrix.txt

Recommended Directory Location for Script

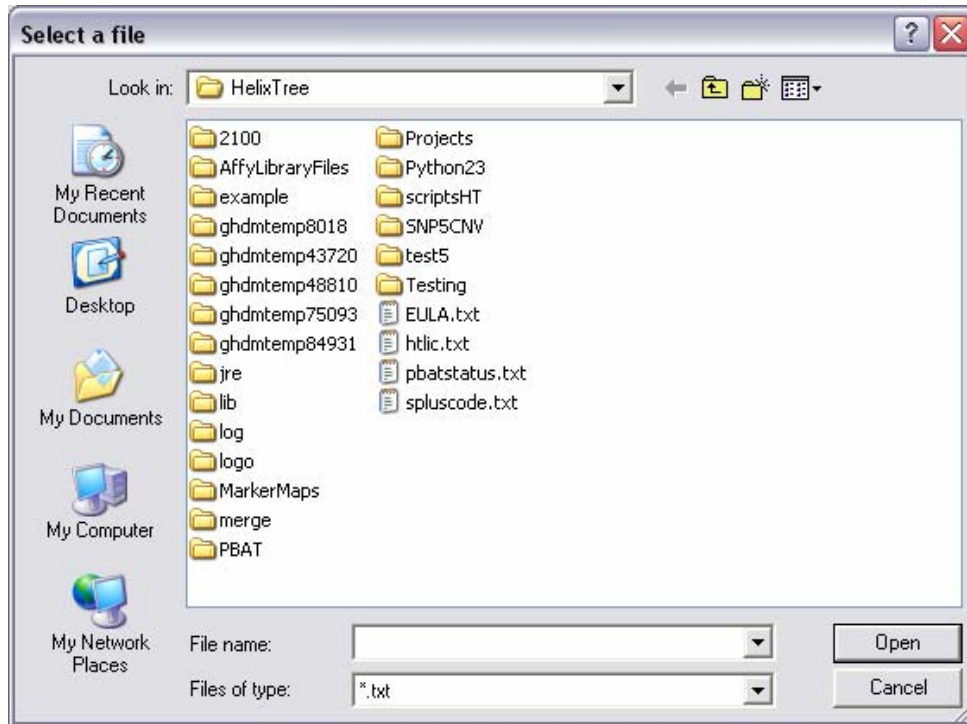
A good directory location for saving this script would be:

C:/HelixTree/scriptsHT/user/HelixTree/File/.

When saved to this folder, the script will be accessible from the File menu of the Project Viewer.

Using the Script

To run this script, you must have opened a project in HelixTree. Select the Import Illumina iControlDB Data script from the project viewer menu location where it was stored, or from the select **Tools->Run Script** to open a dialog to browse for the script location. A file browser will open for you to search for the tab-delimited text file you wish to import.



After you have selected your file, click **Open**. The file you selected will open when the import is complete.

The screenshot shows a software application window titled "Sheet 1" with a menu bar (File, Edit, Analysis, Genetics, Scripts, Help) and a toolbar. The main area displays a data table with the following structure:

Unsort	Sample ID	G 1	G 2	G 3	G 4	G 5
	rs1	rs2	rs3	rs4	rs5	
1	CaseSample_0	??	??	??	??	?
2	Control1	T_C	C_C	A_G	G_G	G
3	Control2	T_T	C_C	A_A	G_G	G
4	Control3	C_C	C_C	A_G	G_G	G
5	Control4	T_T	C_C	A_A	G_G	A
6	Control5	T_C	C_C	A_G	G_G	A
7	Control6	T_T	C_C	G_G	G_G	A
8	Control7	T_C	C_C	A_A	G_G	G
9	Control8	T_C	C_C	A_A	G_G	A
10	Control9	T_T	C_C	A_A	G_G	A
11	Control10	T_T	C_C	A_G	A_G	G
12	Control11	T_T	C_C	A_A	A_G	A
13	Control12	T_T	C_C	A_A	A_G	A
14	Control13	T_C	C_C	A_G	G_G	G
15	Control14					